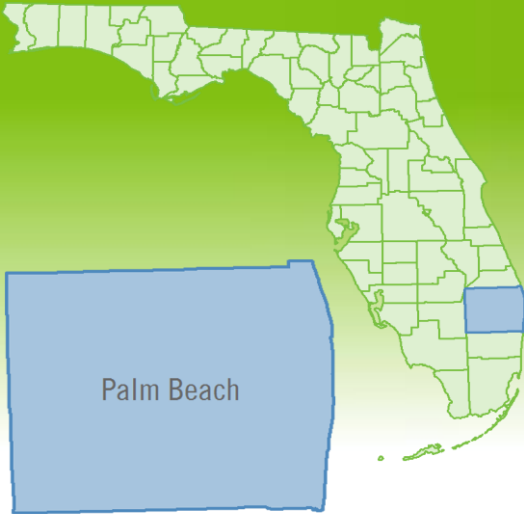


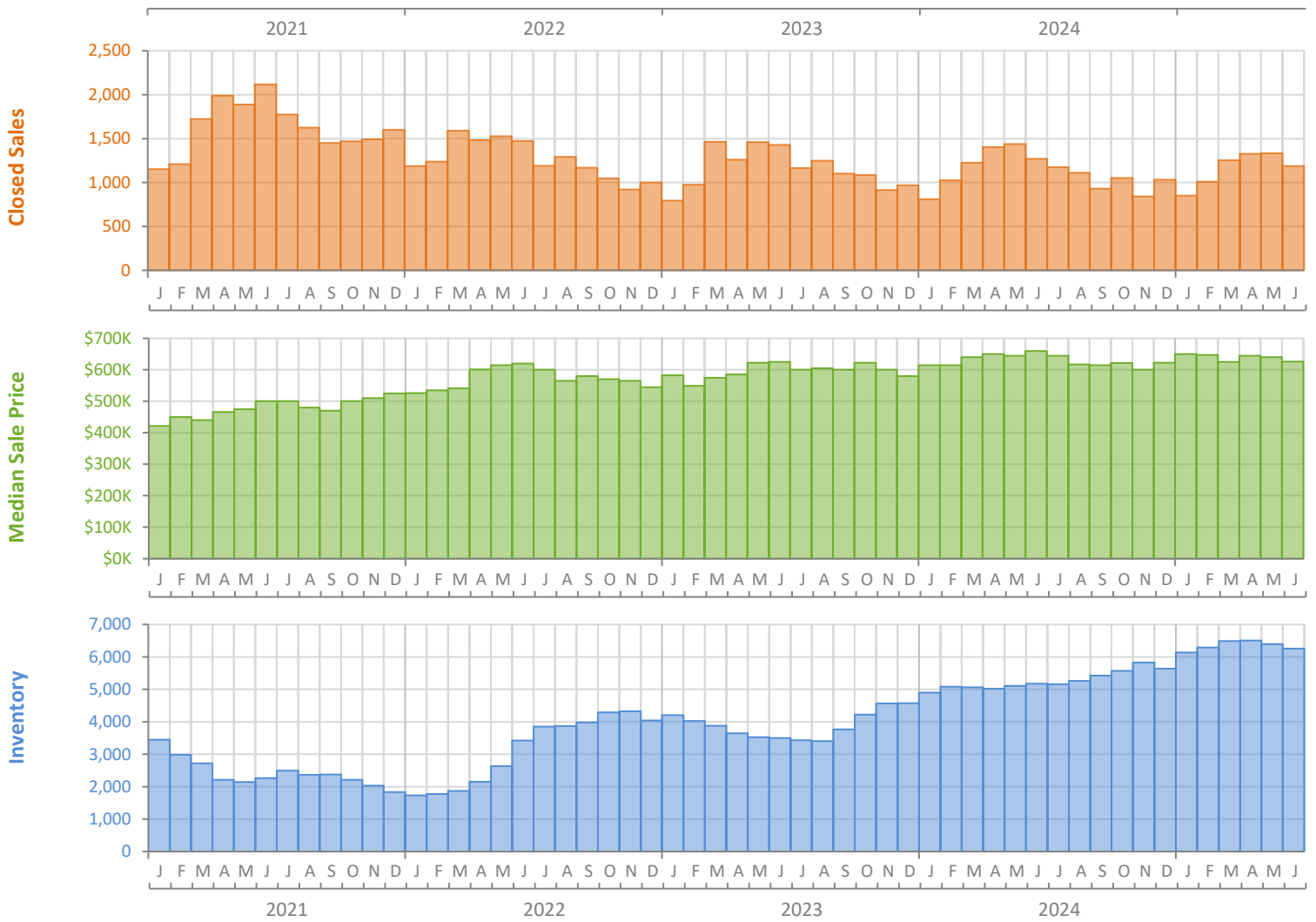
# Monthly Market Summary - June 2025

## Single-Family Homes

### Palm Beach County



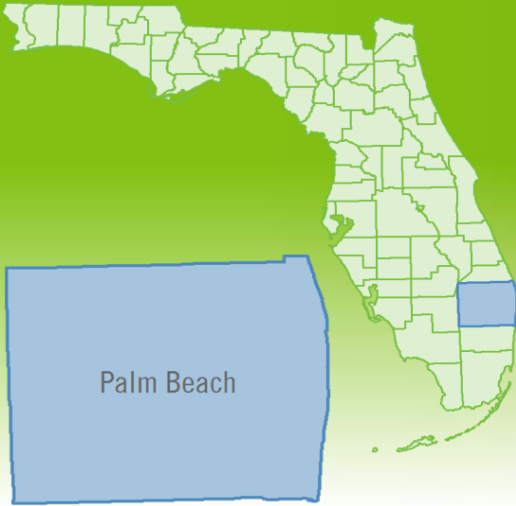
	June 2025	June 2024	Percent Change Year-over-Year
Closed Sales	1,187	1,269	-6.5%
Paid in Cash	486	547	-11.2%
Median Sale Price	\$626,000	\$659,999	-5.2%
Average Sale Price	\$1,137,329	\$1,138,918	-0.1%
Dollar Volume	\$1.4 Billion	\$1.4 Billion	-6.6%
Med. Pct. of Orig. List Price Received	93.1%	94.6%	-1.6%
Median Time to Contract	42 Days	35 Days	20.0%
Median Time to Sale	88 Days	80 Days	10.0%
New Pending Sales	1,208	1,149	5.1%
New Listings	1,637	1,640	-0.2%
Pending Inventory	1,769	1,765	0.2%
Inventory (Active Listings)	6,259	5,170	21.1%
Months Supply of Inventory	5.7	4.5	26.7%



# Monthly Distressed Market - June 2025

## Single-Family Homes

### Palm Beach County



		June 2025	June 2024	Percent Change Year-over-Year
Traditional	Closed Sales	1,176	1,261	-6.7%
	Median Sale Price	\$629,250	\$660,000	-4.7%
Foreclosure/REO	Closed Sales	8	7	14.3%
	Median Sale Price	\$367,500	\$495,000	-25.8%
Short Sale	Closed Sales	3	1	200.0%
	Median Sale Price	\$308,500	\$305,777	0.9%

