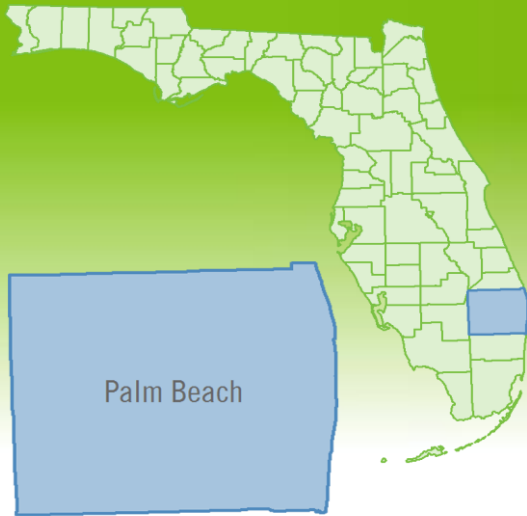


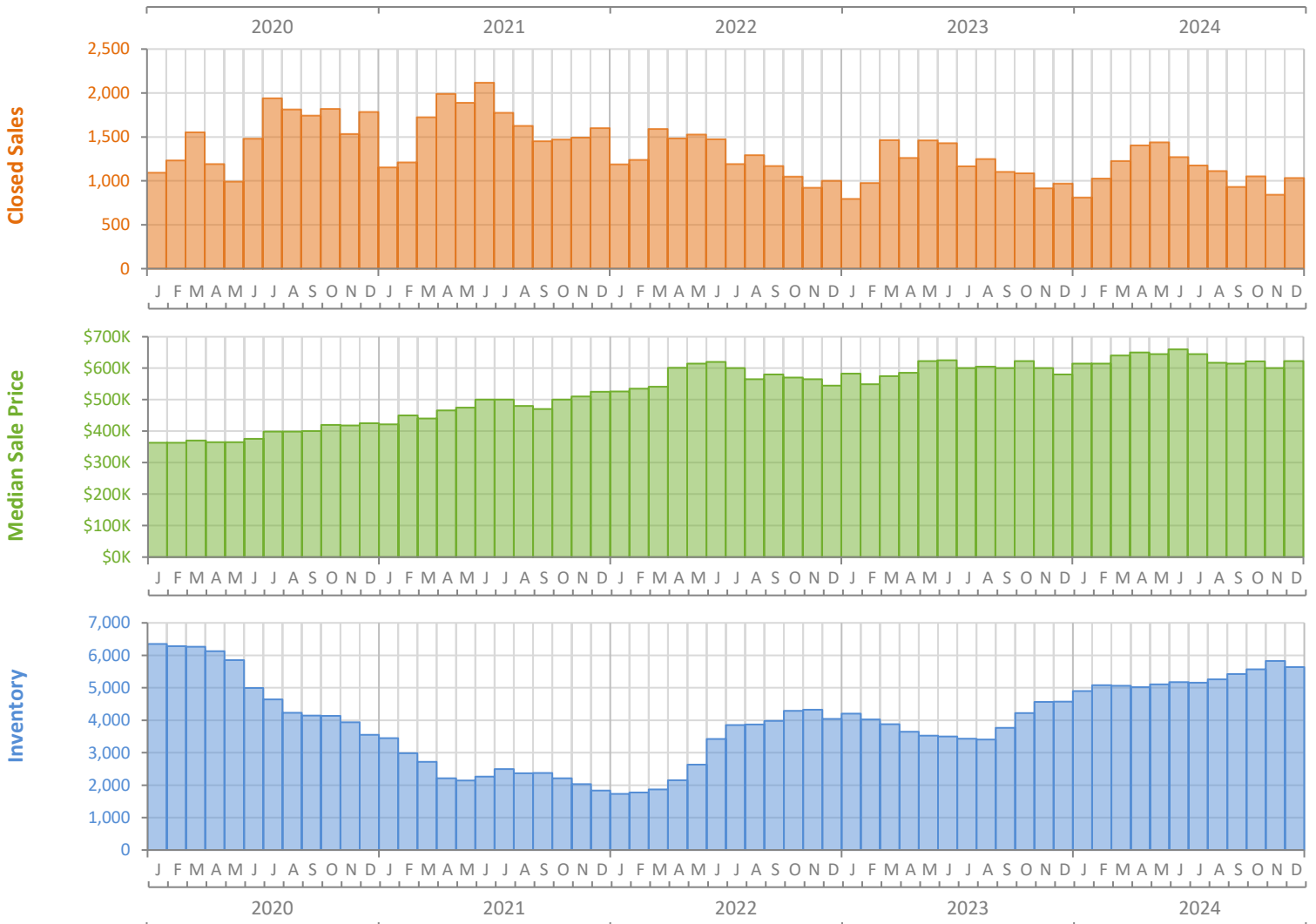
# Monthly Market Summary - December 2024

## Single-Family Homes

### Palm Beach County



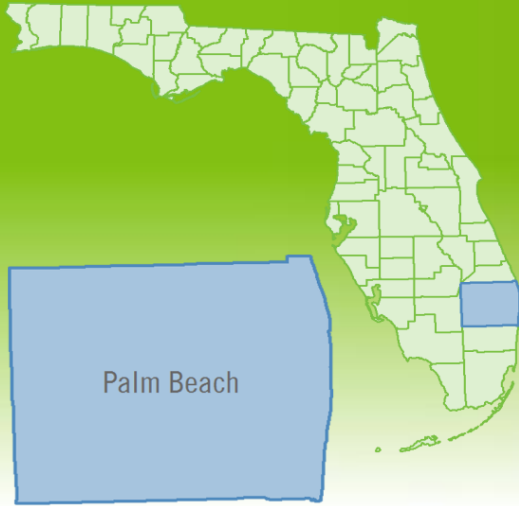
	December 2024	December 2023	Percent Change Year-over-Year
Closed Sales	1,032	969	6.5%
Paid in Cash	448	444	0.9%
Median Sale Price	\$622,500	\$580,000	7.3%
Average Sale Price	\$1,066,261	\$930,333	14.6%
Dollar Volume	\$1.1 Billion	\$901.5 Million	22.1%
Med. Pct. of Orig. List Price Received	94.2%	95.2%	-1.1%
Median Time to Contract	41 Days	29 Days	41.4%
Median Time to Sale	83 Days	68 Days	22.1%
New Pending Sales	888	842	5.5%
New Listings	1,295	1,249	3.7%
Pending Inventory	1,260	1,307	-3.6%
Inventory (Active Listings)	5,637	4,575	23.2%
Months Supply of Inventory	5.1	4.0	27.5%



# Monthly Distressed Market - December 2024

## Single-Family Homes

### Palm Beach County



		December 2024	December 2023	Percent Change Year-over-Year
Traditional	Closed Sales	1,027	960	7.0%
	Median Sale Price	\$625,000	\$588,000	6.3%
Foreclosure/REO	Closed Sales	5	8	-37.5%
	Median Sale Price	\$450,000	\$440,000	2.3%
Short Sale	Closed Sales	0	1	-100.0%
	Median Sale Price	(No Sales)	\$352,000	N/A

